

GCSE GEOGRAPHY

OPTIONS EVENING 2023



WHY STUDY GEOGRAPHY?

- GEOGRAPHY IS THE STUDY OF THE HUMAN AND NATURAL ENVIRONMENT AND HOW THEY INTERACT WITH EACH OTHER
- IT IS RELEVANT AND TEACHES US ABOUT THE WORLD AROUND US AND HOW WE CAN SHAPE IT
- GEOGRAPHY IS ABOUT THE FUTURE AND ENCOURAGES FLEXIBLE THINKING
- IT FOSTERS TRANSFERRABLE SKILLS, WHICH EMPLOYERS LOOK FOR
- GEOGRAPHY DEVELOPS DECISION-MAKING SKILLS AND AN EVALUATIVE APPROACH



EXAMINATION STRUCTURE

PAPER	WEIGHTING	LENGTH
PAPER 1 – LIVING WITH THE PHYSICAL ENVIRONMENT	35% OF GCSE	1 HOUR 30 MINUTES
PAPER 2 – CHALLENGES IN THE HUMAN ENVIRONMENT	35% OF GCSE	1 HOUR 30 MINUTES
PAPER 3 – GEOGRAPHICAL APPLICATIONS	30% OF GCSE	1 HOUR 15 MINUTES



PAPER I – LIVING WITH THE PHYSICAL ENVIRONMENT

- ECOSYSTEMS, TROPICAL RAINFORESTS & HOT DESERTS
- COASTAL SYSTEMS AND LANDSCAPES
- WEATHER HAZARDS & CLIMATE CHANGE
- RIVER SYSTEMS AND LANDSCAPES
- TECTONIC HAZARDS



PAPER 2 – CHALLENGES IN THE HUMAN ENVIRONMENT

- URBAN ISSUES AND CHALLENGES (LAGOS & LONDON)
- CHANGING ECONOMIC WORLD (NIGERIA & THE UK)
- RESOURCE MANAGEMENT (FOOD, WATER & ENERGY)



PAPER 3 – GEOGRAPHICAL APPLICATIONS

- TAUGHT FIELDWORK
- UNSEEN FIELDWORK
- ISSUE EVALUATION



FIELDWORK OPPORTUNITIES

2 DAYS COMPULSORY FIELDWORK

ICELAND

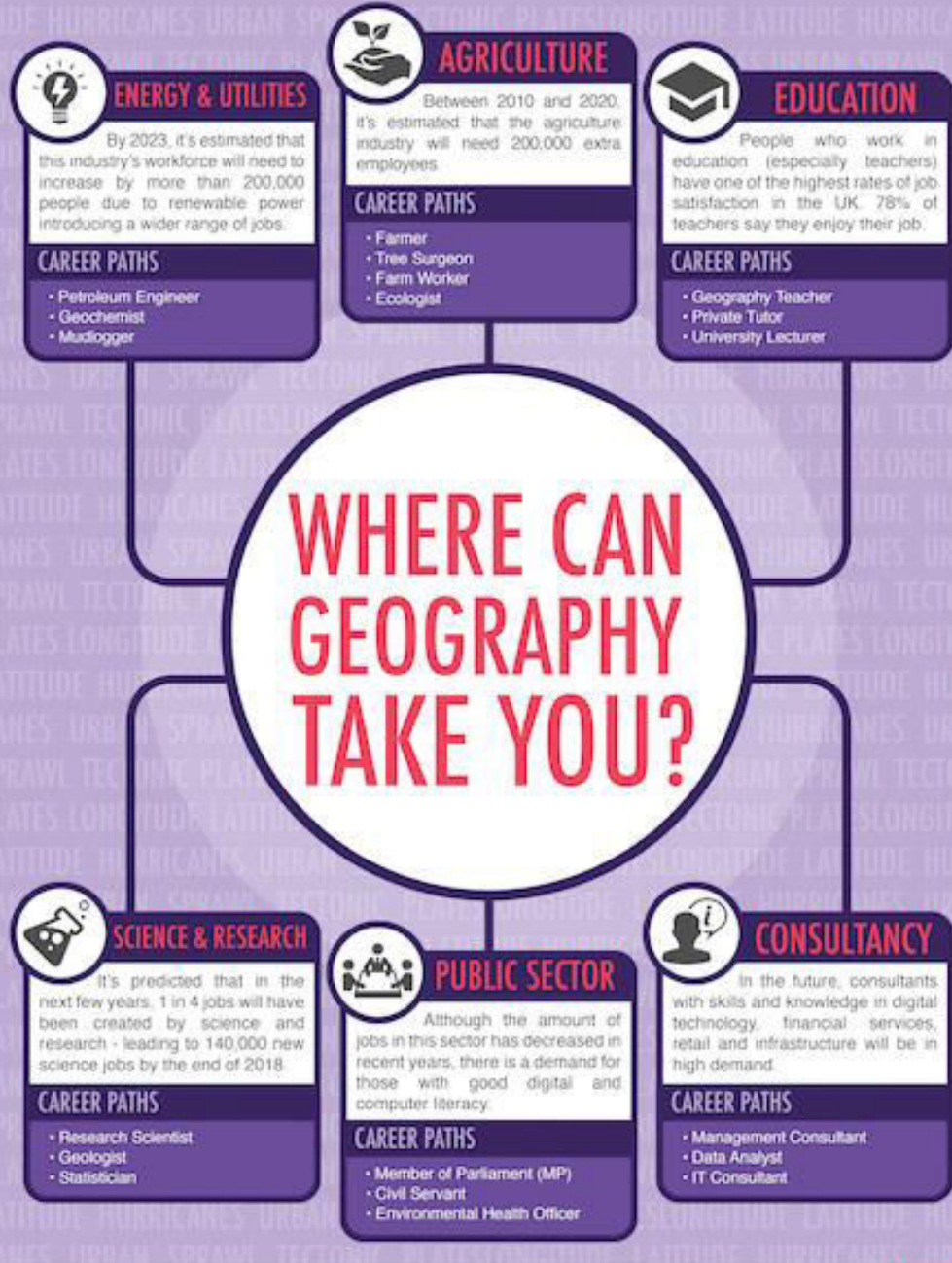
LONDON

NORTH
WALES

LIVERPOOL
CITY CENTRE

AINSDALE





Want to learn more? Go to

www.successatschool.org

Data sources: LinkedIn, Guardian CPS
Quint, PwC, Department for Media, Culture & Sport, Bright Grid, ONS

**National
Careers
Service**

© Success at School Ltd



FURTHER INFORMATION/QUESTIONS

- ANY QUESTIONS, CONTACT
MR SMYTH
(smythr@hilbre.wirral.sch.uk)
OR YOUR GEOGRAPHY
TEACHER
- FOR FURTHER DETAILS OF
THE GCSE GEOGRAPHY
COURSE, VISIT
<https://www.aqa.org.uk/subjects/geography/gcse/geography-8035/specification-at-a-glance>

