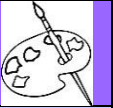




Hilbre High School Art Department Knowledge Organiser/Summer Term 2020



Y7 Unit 3/Landscape

In this unit you will explore the use of Landscape in art, adding to prior knowledge from formal elements and colour theory units. You will also be introduced to new artists, techniques and colour perspective.

Tonal Landscape: Re-cap tonal skills, showing tonal distance

Colour Landscape: Re-cap colour skills showing colour perspective (bluer towards horizon)

Enlargement: Re-cap enlargement skills without grid

Mixed Media: Use different materials on your Landscape

Relief work: Build up the 'surface' of your Landscape with multiple layers, using materials such as string, tissue paper and corrugated cardboard

Project Word bank

Horizon - The furthest point in a picture

Foreground - The nearest point in a picture (full detail)

Middle Distance - Between the foreground and horizon (some detail)

Background - Towards the horizon (no detail)

Perspective - Using colour saturation to describe distance (blue)

Collage - The use of different types of paper to colour and describe an image/picture

Photo Montage - Using photographs (or part of) to describe an image/picture

Mixed Media - The use of different materials on a piece of work

Low Relief - Build up the 'surface' of your work

Skills bank (highlight when completed)

Draw the same landscape twice using resource sheets in line only	Add tonal shading and mark making to 1 Landscape Image	Paint 2 nd Landscape image, mixing colours to describe image	Enlarge drawing of Landscape
Use mixed media techniques to describe colour	Build up surface texture of Landscape (3D/low relief)	Link your work to the work of other Landscape artists	Be able to recognise and describe prior learning and how you have developed these techniques/use of materials

HW

HW1: Bring in sandwich bags of different coloured found paper (from magazines/brochures/newspapers)

HW2: Bring in a household item (that is not a paintbrush) to paint with